

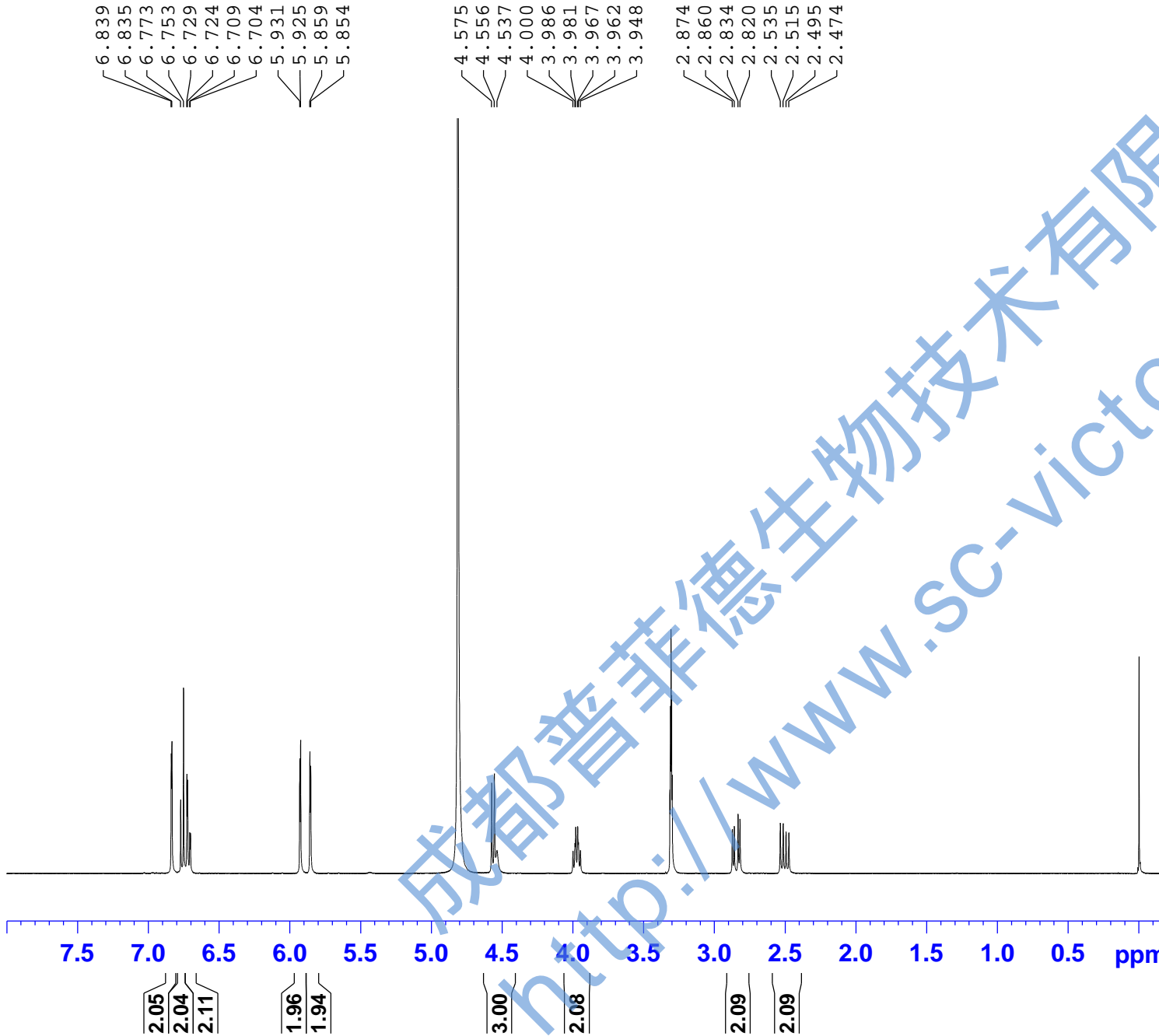
BRUKER

Current Data Parameters
NAME ErChaSu-1H NMR CD3OD
EXPNO 1
PROCNO 1

F2 - Acquisition Parameters
Date_ 20170803
Time 16.38
INSTRUM spect
PROBHD 5 mm PABBO BB/
PULPROG zg30
TD 65536
SOLVENT MeOD
NS 16
DS 2
SWH 8012.820 Hz
FIDRES 0.122266 Hz
AQ 4.0894465 sec
RG 116.95
DW 62.400 usec
DE 6.50 usec
TE 301.1 K
D1 1.00000000 sec
TD0 1

==== CHANNEL f1 =====
SFO1 400.1324710 MHz
NUC1 1H
P1 14.79 usec
PLW1 11.50800037 W

F2 - Processing parameters
SI 65536
SF 400.1300087 MHz
WDW EM
SSB 0
LB 0.30 Hz
GB 0
PC 1.00
SR 8.65 Hz





157.74
157.50
156.86
146.19
146.16

132.19

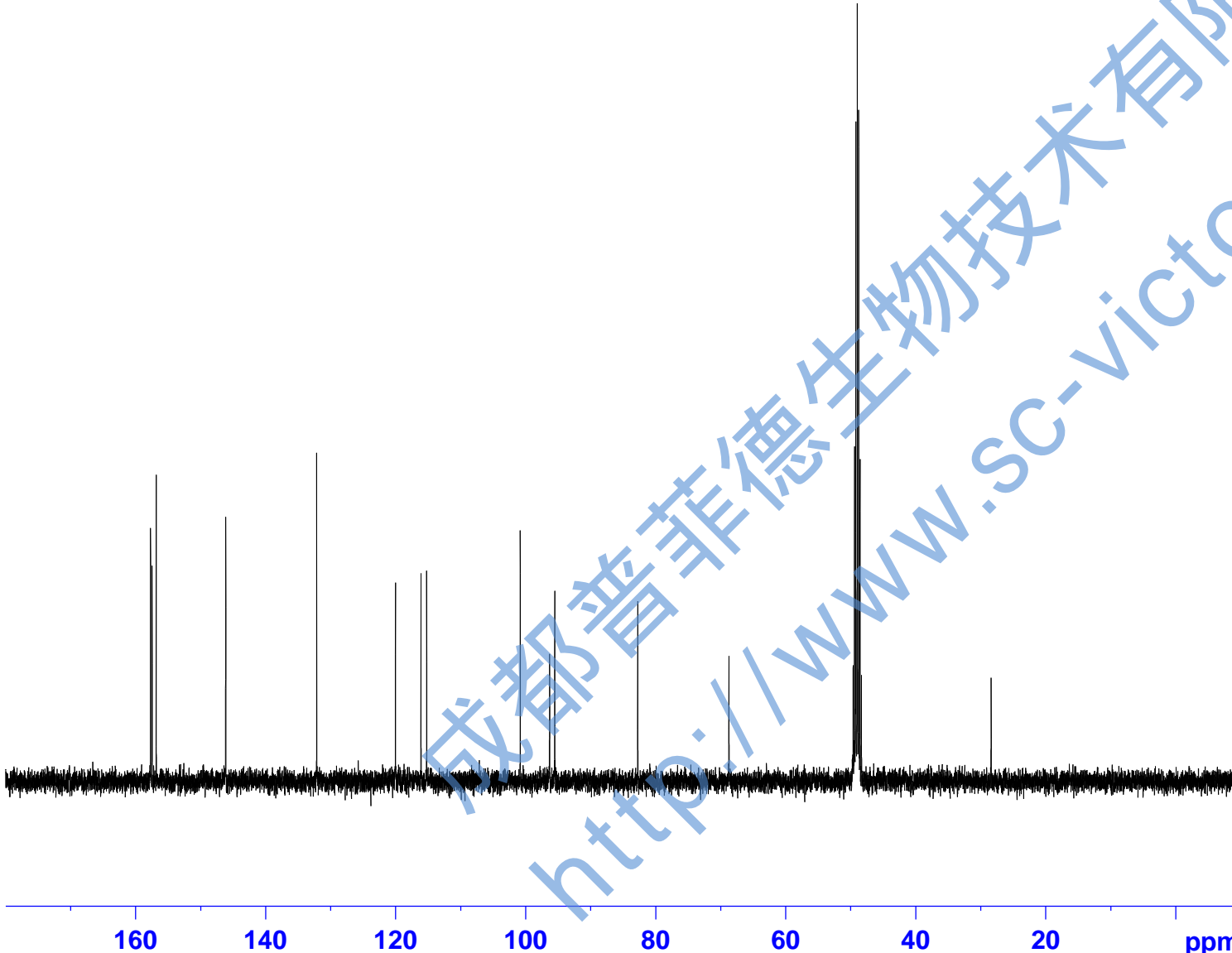
120.06
116.13
115.26

100.86
96.35
95.55

82.78

68.75

28.42



Current Data Parameters
NAME ErChaSu-13C NMR CD3OD
EXPNO 1
PROCNO 1

F2 - Acquisition Parameters
Date_ 20170803
Time 16.56
INSTRUM spect
PROBHD 5 mm PABBO BB/
PULPROG zgig30
TD 65536
SOLVENT MeOD
NS 121
DS 4
SWH 24038.461 Hz
FIDRES 0.366798 Hz
AQ 1.3631488 sec
RG 202.5
DW 20.800 usec
DE 6.50 usec
TE 301.2 K
D1 2.0000000 sec
D11 0.0300000 sec
TD0 1

==== CHANNEL f1 =====
SFO1 100.6228298 MHz
NUC1 13C
P1 10.13 usec
PLW1 51.0000000 W

==== CHANNEL f2 =====
SFO2 400.1316005 MHz
NUC2 1H
CPDPRG[2] waltz16
PCPD2 90.00 usec
PLW2 11.50800037 W
PLW12 0.31077999 W

F2 - Processing parameters
SI 262144
SF 100.6126336 MHz
WDW EM
SSB 0
LB 1.00 Hz
GB 0
PC 1.40
SR -135.36 Hz